



MENCORSA

Custom Made Space Solutions

REAL ESTATE SOLUTIONS

INDUSTRIAL BUILDINGS

FOR LEASE OR SALE



OUR LOCATION

SALTILLO, COAHUILA PERIFERICO II



SPECIFICATIONS



LOCATION

PERIFÉRICO LUIS
ECHEVERRÍA COL. AVICOLA
SALTILLO, COAHUILA



AREAS

BUILDING: 41,745.95 SQFT / 3,878.33
SQM
OFFICES: 4,483.81 SQFT / 416.56 SQM
TOTAL: 46,229.76 SQFT / 4,294.89 SQM

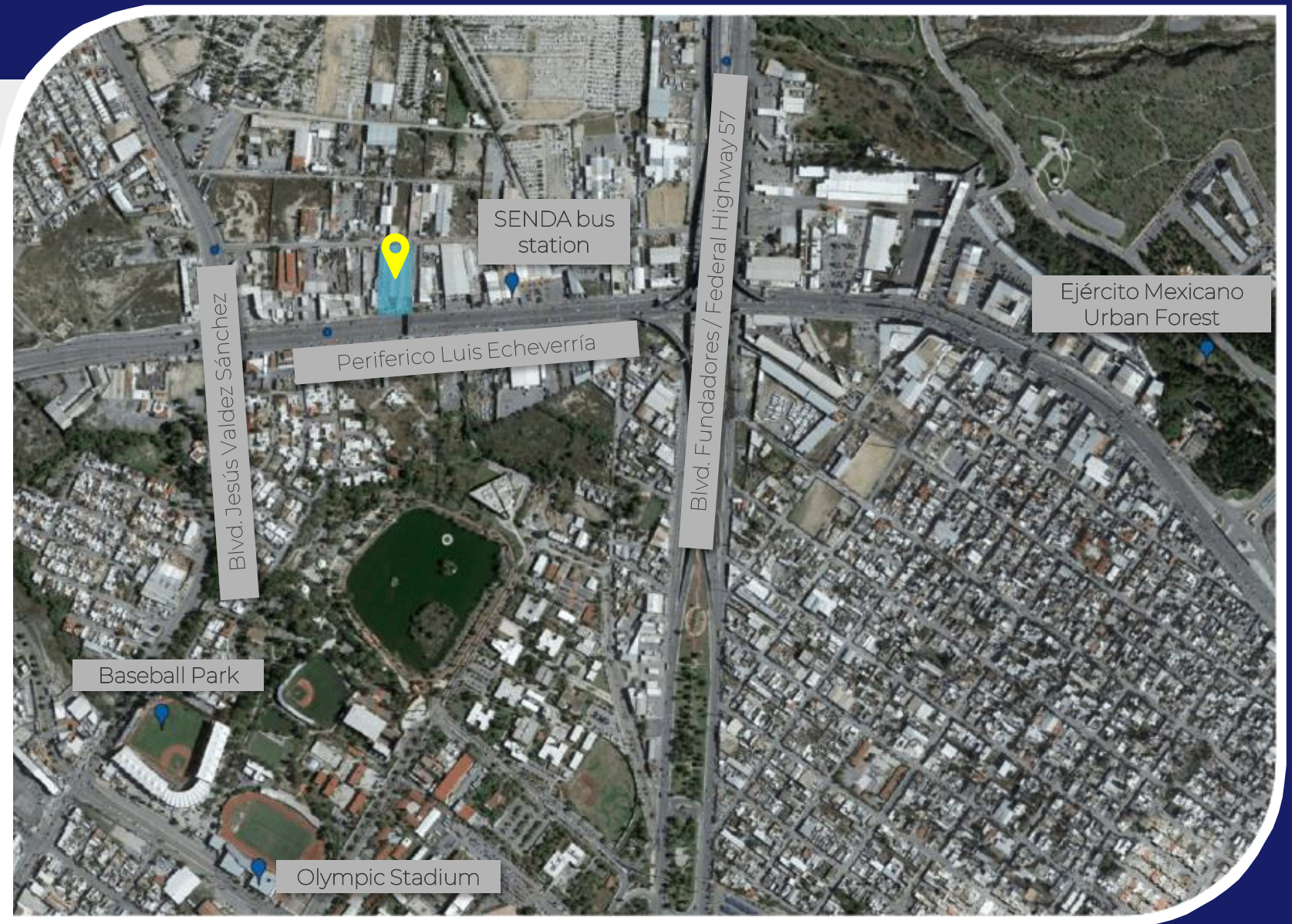


SERVICES

WATER
SEWAGE
LIGHTING
ELECTRICITY
TELEPHONE

LOCATION

<https://goo.gl/maps/DKKmptiACYQooa4A7>

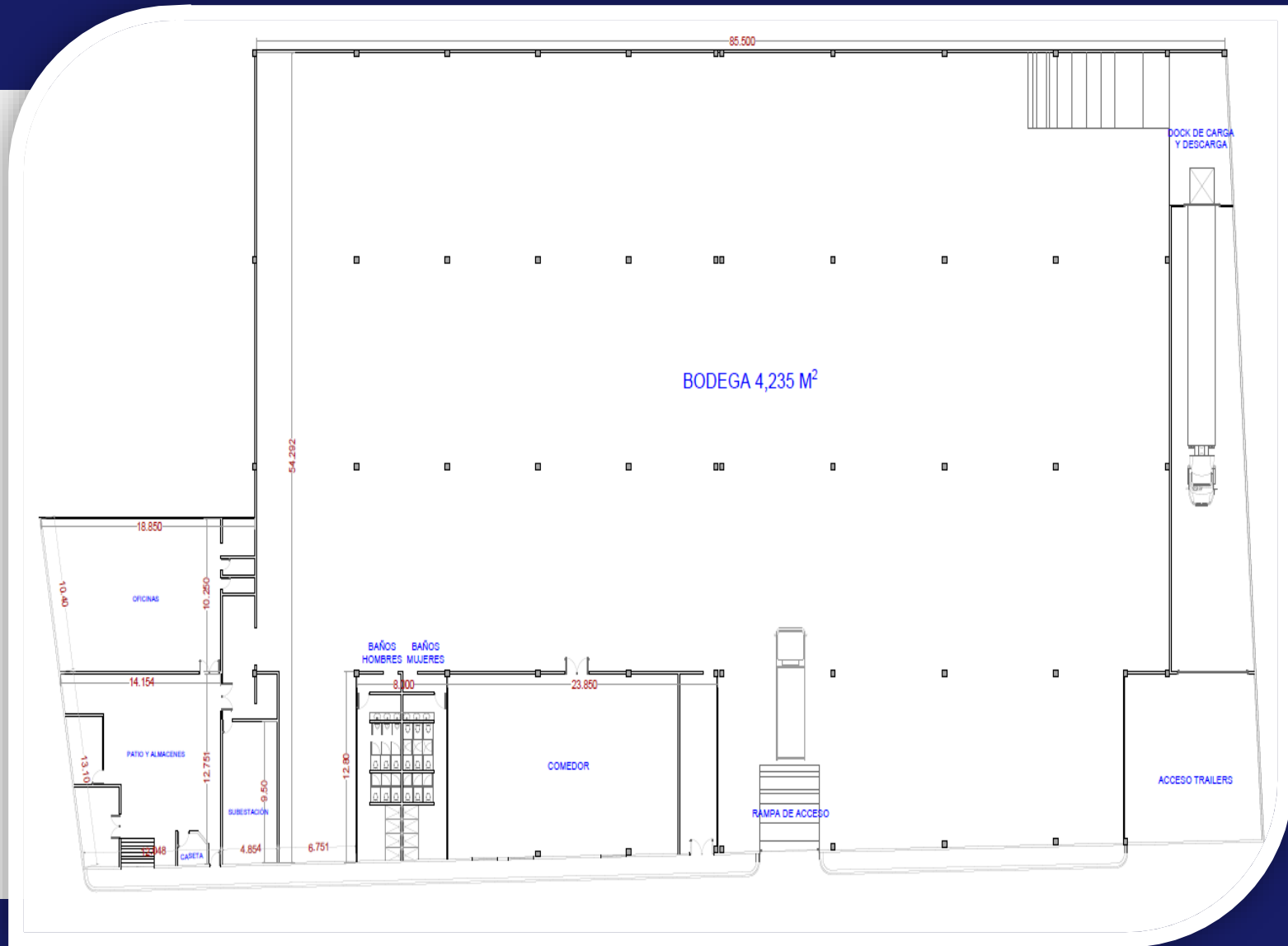


LOCATION



LAYOUT

AREA	Building: 41,745 sqft / 3,878 sqm Offices: 4,483 sqft / 416 sqm
LIGHTING	16" pendant bell lamps 227 W
LEVELER RAMPS	2 leveler ramps for loading docks 25,000 lbs (11,339 kg) (Power ramp)
FLOOR LEVELER RAMPS	1 floor level door
FLOOR SPECS	Concrete floor 7.08 in (18 cm) thick, 250 kg/cm2 (fibramesh)
BAY SIZE	5 bays at 7.90 meters and 4 bays at 10 meters with double central columns
STRUCTURE	Joist type roof trusses with 24 gauge Pintro sheet with 1 ½" AISLAKOR insulation and 25% acrylic sheet on the deck achieving a perfect daytime lighting for energy savings
VENTILATION	Gravity fans
HEIGHT	Min: 14 ft (4.30 meters) Max: 22 ft (6.70)
PARKING	10 parking spaces per building



PERIFERICO II





CONTACTO / CONTACT

Para mayores informes sobre como Grupo Mencorsa puede satisfacer sus necesidades de espacio, puede contactarnos en nuestras oficinas ubicadas en:

For more information about how Mencorsa Group can meet your space needs, you can contact us at our offices located at:

Bldv. Valdez Sánchez S/N Km. 8.52
Arteaga Coahuila 25369, México



México 011 +52 (844) 698 2200

- **Liliana Mendel**
lilianamendel@yahoo.com.mx
- **Claudia Rodríguez**
claudia.rodriguez@mencorsa.com
- **Ernesto Martínez**
ernesto.mtzch@mencorsa.com



Para información adicional visita
nuestra página web:

www.mencorsa.com

For additional information, visit our website:

www.mencorsa.com